

# THE SHERINGTON



# WELCOME PACK

2015

As prepared by the  
**Sherington Historical Society**

Version 1.0 (March 2015)



# Useful Numbers

## Village Numbers

Alban Hill Nursery	01234 711513
Charlesberry Kennels	611289
Dorrill Auto Services	612615
German Auto Centre	217141
SCAN (Editor)	611587
SCAN (Advertising)	01234 391328
Sherington Bowls Club	01234 391486
Sherington CE School	610470
Sherington Historical Society	216543
Sherington Lace Group	01234 711128
Sherington Nursery (Crooks)	610236
Sherington Parish Council	616283
Sherington Pre-School	07866 409169
Sherington Rectory	610521
Sherington Shooting Club	610333
Sherington Shop / Post Office	618341
Sherington Twinning Association	613171
Sherington Village Hall	611000
The White Hart	611953
Tom Haynes, The Garage	611073
(For more visit <a href="http://www.sherington.org.uk">www.sherington.org.uk</a> )	

## Local Authority

Police	08458 505505
Neighbourhood Watch	686169
N P Town Council	618756
Middleton Swimming Pool	610477

Mark Lancaster, MP	01908 648433
Keith McLean, Councillor	
<a href="mailto:keith.mclean@milton-keynes.gov.uk">keith.mclean@milton-keynes.gov.uk</a>	

## Newport Pagnell Numbers

N.P. Medical Centre	611767
Kingfisher Surgery	618265
Astonlee Veterinary Surgery	611637
Willow Group Vet Practice	610982
N.P. Library	610933

## Churches

St Laud's Sherington	610521
----------------------	--------

St Peter & St Paul with St Luke's	611145
St Bede's R.C. Church	671342
United Reformed Church	611427
The Methodist Church	670332
The Baptist Church	618898

## Schools / Children

Amicus Youth Group	612815
Boys Brigade	612292
Cedars Combined School	610561
Emberton School	01234 711518
Filgrave School	01234 711534
Girls' Brigade Explorers	618679
Green Park Combined School	216389
N P Beavers/Cubs / Scouts	318302
N P Youth Club	211701
N. P. Rainbows, Brownies, Guides	311316
N.P. Childminders Link	616616
N.P. Youth FC	612080
Northern Pastures Preschool	

	07905 450816
Olney Childminding Support Group	
	01234 240607

Olney & Newport Youth Community	
Theatre Group	01234-711933
Olney Scouts	01234-712030
Olney Wives & Mothers Club	
	01234 711336

Olney Youth Club	01234 711217
Ousedale Secondary School	210203
Portfields Combined School	616060
River Meadow Pre-school	615200
Tickford Park Primary School	610431

## Local Groups

Royal British Legion Club	613604
Friends of Cowper & Newton Museum	
	01234 713887
N. P. Women's Institute	611070

# WELCOME

Welcome to *The Sherington Welcome Pack*. In fact welcome to Sherington. This booklet is designed to give new residents of Sherington a summary of what happens within the village and who to contact if you would like to join in with any of the activities within. We have also included a map (see over) so you can see where all of the local amenities are.

When putting this pack together we asked all of the known groups within the village to provide a page of information detailing who they are, what they do, where and when they meet and what costs are involved. This gives you a ready resource that can be used at any time for your best advantage.

It is hoped that this pack is useful to you but if you feel that the pack is missing any information that you feel would be helpful to new residence like yourself, then please let the editorial team know and we will add it in for the next issue to help the next newcomer to the village.

As with any resource like this, there are always changes, we are hoping to keep an updated copy of this on the Sherington website (<http://www.sherington.org.uk>) that can be reviewed or down loaded.

If you have any updates to give these can be sent to Mark Vale, and can be sent via:

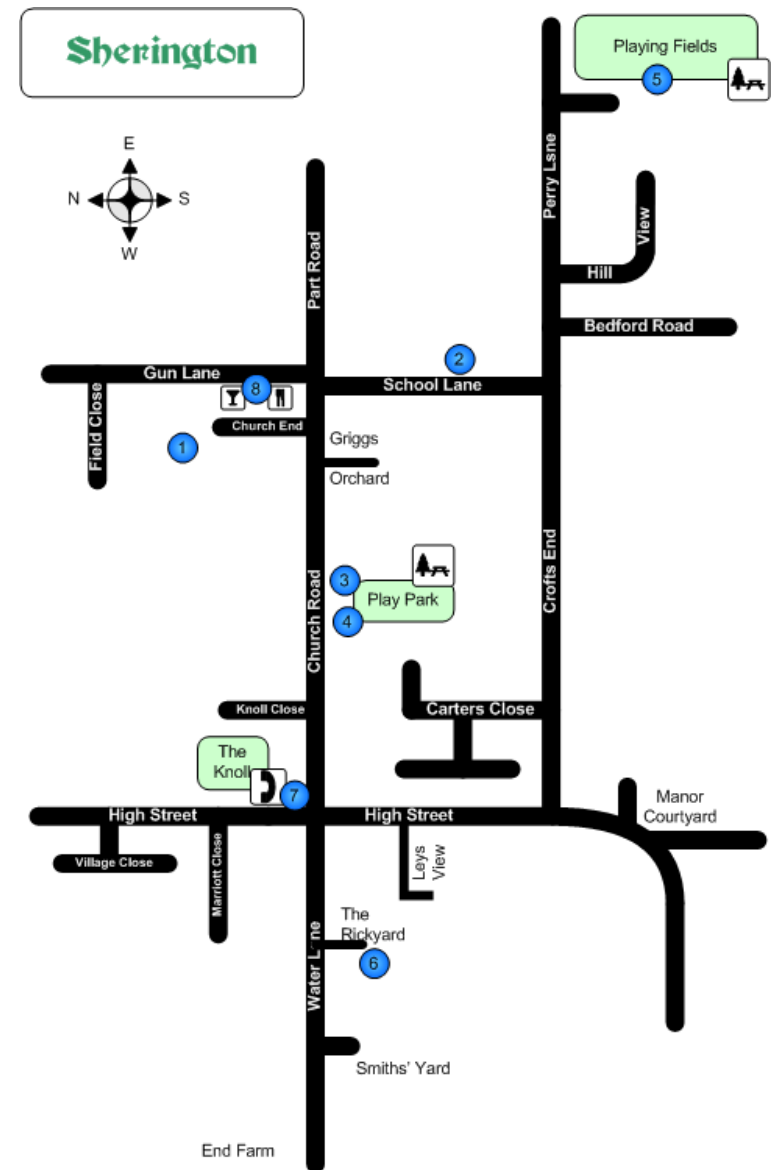
- email: [mark.vale@getronics.com](mailto:mark.vale@getronics.com)
- phone 01908 216543
- address: Knoll Cottage, The Knoll

I hope that you find this a useful resource.

Mark Vale

# Contents

Welcome.....	3
Contents.....	4
Map.....	5
Local Amenities.....	6
Sherington Historical Society.....	7
Sherington Short Mat Bowls Club.....	8
Melanie Beeston School of Dance.....	9
Sherington Pre-School.....	10
Sherington Music Folk Workshop.....	11
Sherington Village Hall.....	12
SCAN Magazine.....	13
St. Laud's Church.....	14
Sherington Website ( <a href="http://www.sherington.org.uk">www.sherington.org.uk</a> ).....	16
Sherington Parish Council.....	17
Thumbsticks.....	18
SheringTone Fitness.....	19
Sherington CE Infants School.....	20
Sherington Lace Group.....	21
Sherington Twinning Association.....	22
Sherington Youth Club.....	23
The New Thursday Group, Sherington.....	24
1 <sup>st</sup> Sherington Brownies.....	25
A Fitter Life.....	26
Sherington Village Store.....	27
Useful Numbers.....	30



#### KEY TO MAP

- |   |   |
|---|---|
| 1 | St Laud's Church                        |
| 2 | Sherington CE School                    |
| 3 | Village Hall                            |
| 4 | Sherington Village Shop and Post Office |

- |   |                  |
|---|------------------|
| 5 | Sports Pavilion  |
| 6 | The Gun Shop     |
| 7 | Public Phone Box |
| 8 | The White Hart   |

# Local Amenities

Amenities within the village that are run by local people for local people.

## Village Shop

**Sherington Village Shop and Post Office**, Church Road  
Web [www.sheringtonshopco.co.uk](http://www.sheringtonshopco.co.uk)

**The Pavilion and Sports and Recreation Ground**, Perry Lane: 01908 217687

## Public House

**The White Hart**, Gun Lane,  
Keith Sheppard Tel & Fax: 611953  
Email: [whitehartresort@aol.com](mailto:whitehartresort@aol.com)  
Web: [www.whitehartsherington.com](http://www.whitehartsherington.com)

## Garage Services

**Tom Haynes**, The Knoll, Tel: 611073

**Dorrill Auto Services**, Water Lane, Tel: 612615

## Joseph Joos,

German Auto Centre, Smiths Yard, Unit D,  
Water Lane. Tel: 217141, Fax: 217353,  
[info@josephjoos.co.uk](mailto:info@josephjoos.co.uk)

## Electricians

**The Sherington Sparks Electrical Contractors**  
Tel: 07956 948830  
Email: [the.sherington.sparks@gmx.co.uk](mailto:the.sherington.sparks@gmx.co.uk)

## Photocopying

The Rectory, School Lane Tel: 610521

**Bernard Crook Garden Services Ltd**, Sherington Nurseries, Bedford Road,  
Tel: 610236 / 210672,  
web: [www.sheringtonnurseries.co.uk](http://www.sheringtonnurseries.co.uk)

## Alban Hill Nursery,

Tel: 01234 711513  
<http://www.albanhillnurseries.co.uk>  
Manager: Matthew Peck,

## Builders

**R G Cook**, 27 Church Road, Tel: 614239

## Carpenter and Joiner

**John F Risby** Tel: 612483

## Plumbing and Heating

Blue Flame  
Gun Lane; Tel: 216769;  
Mobile: 07860 332287  
Web: [www.blueflamemk.co.uk](http://www.blueflamemk.co.uk).  
Email: [blueflame.mk@btconnect.com](mailto:blueflame.mk@btconnect.com)

## MISC

Sherington Shooting Centre:  
Water Lane Farm  
Water Lane  
MK16 9NP  
Tel : 01908 610333  
Mobile : 07748 817921  
Web: [www.sheringtonshootingcentre.co.uk](http://www.sheringtonshootingcentre.co.uk)  
Email:  
[jgardner@sheringtonshootingcentre.co.uk](mailto:jgardner@sheringtonshootingcentre.co.uk)

## Garden Services



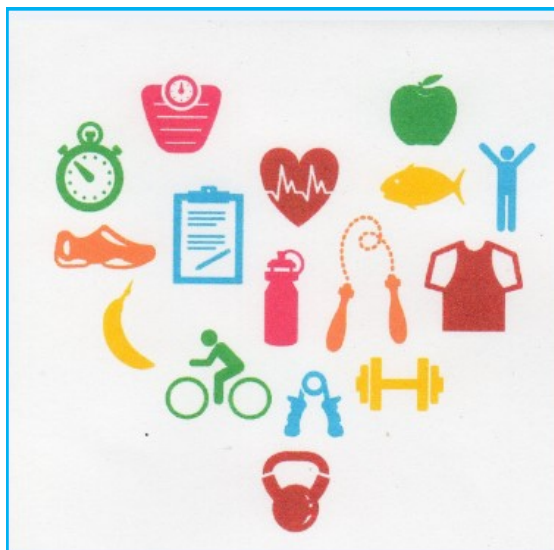
Udi and Dina  
8b Church Road  
MK16 9PB  
Shop 01908 618341  
Mobile 07843 880664  
E-mail [udi68@rediffmail.com](mailto:udi68@rediffmail.com)

We offer:

- Local **Post Office**
- Newspapers (including home delivery)
- Off Licence
- Fresh bread
- Fresh fruit and vegetables
- Dairy Products
- Groceries
- Frozen foods
- Soft drinks
- Confectionary, chocolate, snacks and much more
- Stationary and greeting cards
- Pet food

Opening hours: Monday to Friday 7 am—7 pm  
Saturday 7:30 am—6 pm  
Sunday 8 am—12 Noon

Please come and talk to us, we are here to help you.



## A Fitter Life

*Get that good feeling...*

*Buy 3 personal training sessions for £20 each and get the 4th free*

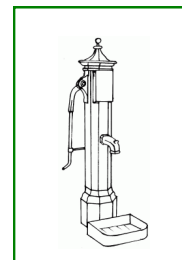
Exercise with me, a friendly fully qualified fitness instructor, in my private gym.

All sessions are totally focus on you and what you want to achieve, whether your goal is to change your lifestyle or increase your fitness level.

It's all about you... you even get to choose the music you want to listen to!

*Doesn't that sound good?*

**Phone:** 07793 720413  
**Email:** [info@afitterlife.co.uk](mailto:info@afitterlife.co.uk)  
**Visit:** [www.afitterlife.co.uk](http://www.afitterlife.co.uk)  
**Like:** [www.facebook.com/afitterfile](https://www.facebook.com/afitterfile)



## Sherington Historical Society

[www.mkheritage.co.uk/shhs](http://www.mkheritage.co.uk/shhs)

Sherington Historical Society group meet in Sherington Village Hall on the second Tuesday in each month at 8-00 pm for general discussion and get together and tea and biscuits. All are welcome.

Our aim is to record all things Sherington, documents, photographs events. We research all types of aspects of Sherington village life. We sponsor film / slide shows and talks by local historians.

We have an OPEN DAY each year when we put all of our archive material on view to all. All of our archive material is available for research by prior arrangement.

Annual memberships are charged at £6.50 (individual) or £12.00 (couple / family), monthly meeting are £1.00 per member per meeting, with Visitors at £2.50 per meeting.

If you have any queries please talk to:

Mark Vale 01908 216543, [mark.vale@getronics.com](mailto:mark.vale@getronics.com)  
 Betty Feasey 01908 611587, [betty.feasey@btinternet.com](mailto:betty.feasey@btinternet.com)  
 Kay Turrell [kay@cartersclose.co.uk](mailto:kay@cartersclose.co.uk)

Or email the website at [sheringtonhs@yahoo.co.uk](mailto:sheringtonhs@yahoo.co.uk)

# **Sherington**

## **Short Mat Bowls Club**



We play in Sherington Village Hall twice each week.  
Monday afternoons 2pm until 4pm.  
Friday evenings 7pm until 9pm.

You are most welcome to come along; to have  
a go, a chat, a cup of tea and meet the club.  
We have a lot of fun, but we also try to play  
better, each week.

If you would like to have a go come along any  
Monday or Friday, or phone Bob Clarridge  
(Tel: 01234 391486) for more details.

Or view us on line at:-

<http://www.mywebpage.org.uk/sherington.html>

**Why not come and give it a try?**

# **1st Sherington Brownies**



## **Sherington Pavillion**

Mondays 5:30 - 7:00

For 7-10 year old girls

- Badges
- Songs
- Crafts
- Pack Holidays
- Games
- Fun
- Socialise

Contact Kerrie Maxwell  
(Tel: 01908 610166)



## *THE NEW THURSDAY GROUP SHERINGTON*

*We are a group of Sherington ladies of all ages who meet in the Village Hall at 8pm on the first Thursday of each month.*

*We invite you to join us at our meetings - we usually have a guest speaker who gives a talk or demonstration and this is followed by coffee and biscuits and time to socialise. Occasionally, we organise the evening ourselves and have a social evening eg a Quiz, BBQ or Cheese and Wine. Two or three times a year we have an outing to the theatre or a place of interest. If the event organised for the evening is likely to have a general appeal we make it an Open Evening and welcome any gentlemen who would like to attend.*

*The New Thursday Group is not a money-making concern but we do raise money from time to time to support a worthy cause or charity.*

*Do come along, we will be very pleased to see you! If you would like to come, but do not wish to come on your own, please let us know and we will arrange for someone to meet you.*

*Julie Smith*



## **MELANIE BEESTON SCHOOL OF DANCE**



**Classes in Ballet for  
Children aged 3 and above,  
held on Wednesdays and  
Thursdays**

**At Sherington Village Hall.**

- **Taken by a fully qualified dance teacher.**
- **Excellent Examination Results**

**FOR FURTHER DETAILS CONTACT  
MELANIE ON 01908-618438**

Principal: Melanie (Morton) Beeston  
RAD Registered Teacher A.I.S.T.D  
Ballet, National, Modern Dip.

**All pupils are encouraged to reach their maximum potential.  
Classes are friendly and fun but disciplined enough to enhance  
development.**

**Pupils may take examinations with the  
Royal Academy of Dance from 6 yrs.**





## Sherington Pre-School

### **Come and visit us!**

A community based Pre-School with excellent OFSTED reports.  
2 years and 6 months up to school age Close links with local schools

Eligible for Nursery Education Grant Funding

Members of the Pre School Learning Alliance

Foundation Stage Curriculum

Excellent adult to child ratios

Sherington Village Hall is transformed daily into a bright, colourful  
and welcoming nursery setting

**Monday to Thursday mornings - 9:15am - 12:15am**

**Friday Afternoons - 12:30 - 3:30pm**

**Contact Sherington Pre-School on  
07866 409169**

**to book an appointment**

Sherington Village Hall, Church Road, Sherington,  
Newport Pagnell, Bucks MK16 9PB

[www.sherington.org.uk](http://www.sherington.org.uk)

(follow links to Sherington Pre-School)

## Sherington Youth Club

**Sherington Youth Club meet at Sherington  
Village Hall, on Wednesdays (term time only)  
from 7:00pm – 9:00pm**

**The youth club is for children from  
Sherington, Chicheley, Astwood and North  
Crawley from the age of 10 years.**

**The club provides a safe and fun environment  
for all the children to meet with friends, with  
plenty of activities and equipment to keep  
them occupied and entertained.**

**The cost of each session is £1.50.**

**If you have any question or would like to join  
then please call**

**Jay Flanders (07799 005568)**

**or**

**Valerie Hargreaves (07905 227758)**



## Sherington Twinning Association

Welcome to the village of Sherington, we hope that you will enjoy living here.

We have an active twinning association, formed back in 1992, to foster good relations with another community on the continent. In 1997 we officially twinned with the community of Saméon in France, located in the Nord department and just about 20 miles south of Lille.

We have an excellent relationship with Saméon and many of our members have built lasting relationships with the French hosts. However, people come and go and so there are always members in both our associations looking to take part and host or be hosted by their counterparts.

We work on a two year basis, we visit them for a weekend (usually around May Day bank holiday) one year and they visit us the following year at the same sort of time. Numbers vary but we expect to have to find accommodation for 10 – 15 families within our membership. Many of the French families have children, as do our own membership, and it is always fascinating to watch young people with no common language getting on so well. On the subject of language it is nice to be able to communicate in French but by no means essential. Some of our members are very proficient but some have very little or no French save for 'une biere sil vous plait' and 'merci'!

It is not though necessary to host a French family, some members just like to be part of the association and take part in the activities that we organise. We usually have a bar-be-cue, a quiz night and sometimes a dance or another activity. In 2006 we organised a very successful 'Proms in the Park' which was enjoyed by 200+ people and are always looking for new opportunities that will interest the village and, of course, help with our fund raising.

We hope that you would like to find out a bit more about us. You can look at our website at <http://www.sheringtontwinningassociation.org.uk> or talk to our President, Bill Lewis on 613171 or our Vice President, Mick Inskipp on 216214.

## SHERINGTON FOLK MUSIC WORKSHOP

FOR ALL ABILITIES

PLAY WITH OTHER PEOPLE AT A REASONABLE PACE

**IMPROVE YOUR SIGHT READING**

**GAIN CONFIDENCE TO PLAY IN SESSIONS,  
DANCE BANDS OR OPEN MIC NIGHTS**

WE PLAY TUNES MAINLY FROM THE PAUL HARDY TUNEBOOK  
FREE DOWNLOAD AT [www.paulhardy.net](http://www.paulhardy.net)  
(COPIES AVAILABLE TO BORROW)



WE MEET ON THE 2nd THURSDAY OF EVERY MONTH

AT

THE VILLAGE HALL, CHURCH ROAD, SHERINGTON, MK16 9NW  
FROM 8.00-10.00 pm

MAINLY ACOUSTIC, BUT ALL INSTRUMENTS WELCOME

TO FIND OUT MORE RING LIZ ON 07941 403492



## SHERINGTON VILLAGE HALL

---

Located in the centre of the village Sherington Village Hall is a very popular, not for profit organisation that is run by villagers for the benefit of the inhabitants of Sherington. Although the Hall was originally built in 1927 there has been a number of extensions to the Hall since then and is kept in very good condition.

### **Meeting Areas:**

The Hall can offer two meeting spaces, The “Main Hall” and a “Committee Room”. The overall capacity is 100 people and there are plenty of comfortable conference chairs and tables to suit most functions. There is movable staging and a piano in the Main Hall.

### **Facilities:**

It has a Kitchen that offers the facilities to prepare light refreshments, and is equipped with an urn, kettle, cooker and a small number of cups, saucers and plates. There are serving hatches to both the Main Hall and Committee Room from the Kitchen. The Hall also has Toilets including a Disabled Toilet. The Hall is also fitted with detectors and fire alarms. There is a car park directly outside the Hall that will hold 20+ cars. There is a permanent wheelchair ramp leading into the main entrance to the Hall.

### **Booking:**

The Hall is available for booking for many different types of events. If you are wanting more information, or you are wanting to book the Village Hall then please contact:

**Tony Pilcher on 01908 211000 /**  
[Sherington\\_vh@btinternet.com](mailto:Sherington_vh@btinternet.com)

# Sherington Lace Group

The Lace Group meet in Sherington Village Hall every Tuesday evening between 7.30 p.m. and 9.30 p.m. in the small meeting room.

The Group was set up some years ago solely as a bobbin lace group. Over the years other crafts have crept in and now our members embroider, knit and do beadwork as well as lace-making.

We are a friendly group and would welcome newcomers – space permitting. Our meetings are very informal – lots of gossip, tea-drinking and munching our way through chocolate biscuits and liquorice!

If you would like to join us please contact:

Lesley Hancon 01234 711128

E-mail: [lesjohn.hancon@btopenworld.com](mailto:lesjohn.hancon@btopenworld.com)



Sherington CE School  
School Lane  
Sherington  
Newport Pagnell  
Bucks MK16 9NF



In partnership  
with  
Emberton School

[www.sherington.org.uk/](http://www.sherington.org.uk/)  
[sheringtonf@milton-keynes.gov.uk](mailto:sheringtonf@milton-keynes.gov.uk)

01908 610470

## Sherington C E School

*Do you want your child to go to a superb school?*

Come and experience  
our caring, stimulating environment with small class sizes.  
Learn about our 'above national average' achievement  
and traditional values, with strong community links.  
See our modern ICT facilities, 'outdoor' classroom and activity area.

Children aged 4 - 7 from all towns and villages welcome

*"Excellent personal development ensures pupils are well prepared  
for their learning." OFSTED 2007*

**01908 610470**

Please call us for any enquiries, for a prospectus  
or to arrange an individual visit



# SCAN

## Magazine

---

### Editor:

Mrs Betty Feasey 13 School Lane,  
Tel: 611587 Email: [betty.feasey@btinternet.com](mailto:betty.feasey@btinternet.com)

### Treasurer and Advertising Manager:

Mrs Christine Barry 71A Kilpin Green, North Crawley,  
Tel: 01234 391328 Email: [christine.barry3@btinternet.com](mailto:christine.barry3@btinternet.com)

### Sherington Correspondent:

Mr Michael Inskipp The Chapel, The Knoll,  
Tel: 216214, Email: [jackdaw@fastfreenet.com](mailto:jackdaw@fastfreenet.com)

### Printer:

Murrays The Printers [sales@murrays-printers.co.uk](mailto:sales@murrays-printers.co.uk)  
Tel: 01604 696116

---

✦ SCAN is the local parish magazine. It is published 11 times a year and typically consists of up to 72 A5 pages.

✦ The name SCAN comes from the first letter of the names of the four villages of the parish in which it is distributed: Sherington, Chicheley, Astwood and North Crawley. It also covers Hardmead.

✦ The magazine is distributed free of charge to all households in the area. The circulation for the February 2013 issue was 960 copies.

✦ April 2002 saw a change in both Editor and Treasurer/Advertising Manager to Betty Feasey and Wendy Austyn respectively. In March 2006, Christine Barry took over as Treasurer/Advertising Manager.

✦ The February 2013 issue was SCAN number 426. The total number of advertisers since day one exceeds 500.

✦ The editorial team provide their services free, but the printing and materials must be paid for. The costs are met partially by advertising and partially by donations. Advertising in SCAN costs only £240 per annum for a full page and is a cost-effective method of reaching all homes in the area. Half, and third page adverts are also available for £135 and £90 respectfully. Adverts do not meet the full costs of production and the editorial team are always grateful for donations.



## **St Laud's, Sherington**

Rector: Rev. Mandy Marriott  
21 School Lane, Sherington, Milton Keynes  
MK16 9NF  
Tel: 01908 610521  
email:aj.marriott123@gmail.com



We are friends and neighbours from in and around Sherington who meet at St Laud's Church. We want you to feel very welcome. Whatever your situation, we would like to offer you a hand of friendship and welcome you here to the village and to the Church.

St Laud's is part of the SCAN Parish, (SCAN being an acronym standing for **S**herington, **C**hicheley, **A**stwood and **N**orth Crawley) Our rector, the Rev. Mandy Marriott lives within the village (see above for contact details) and leads a small team that serves the spiritual needs of the parish.

Saint Laud's is a rural C of E parish located in Church End. It is sited on one of the higher points in the village, so can be easily seen from most parts.

Saint Laud's normally holds a Holy Communion service at 9.30am on the third Sundays of the month. We also have a new service on the first Sunday of the month at 10:30 called "Something Different". It is a group led service, for the villagers that enjoy something less formal than a Holy Communion service. As well as extra services being held for festivals and special events

## **SheringTone Fitness**



**Combination of Dance, Aerobics and Body Conditioning**

**A total workout for the entire body**

**A fun class for all ages and fitness levels**

**Please come and join us**

**At Sherington Village Hall  
Every Saturday 9.30am—10.30am**

Please bring a drink of water and a mat or towel.  
For more information, call Hazel on 01908 613378  
Or email—SheringToneFitness@hitmail.co.uk



# THUMBSTICKS



The Thumbsticks are a unofficial group of like minded Sherington people who enjoy a walk together in the local countryside for a couple of hours on the first Sunday morning each month.

The walk always commences from The Knoll at 9:30am Whilst walks are local, there might need to be some transport to get there, but this comes a plenty with the group, so please don't worry about bringing your own.

There is no joining fee or walking fee. The group only has two rules which are NO DOGS PLEASE and DON'T BE LATE.

Please check SCAN to confirm the date and to find any further information and special instructions needed for the next walk If you would like any further information or need any detail clarifying then please ring Jack Sparrow [a.k.a. Tony Pilcher] on (01908) 211000

during the year.

All of these details are published in the SCAN magazine, which is distributed throughout the parish.

SCAN Parish has a choir that leads the singing in our services of Holy Communion in the parish.

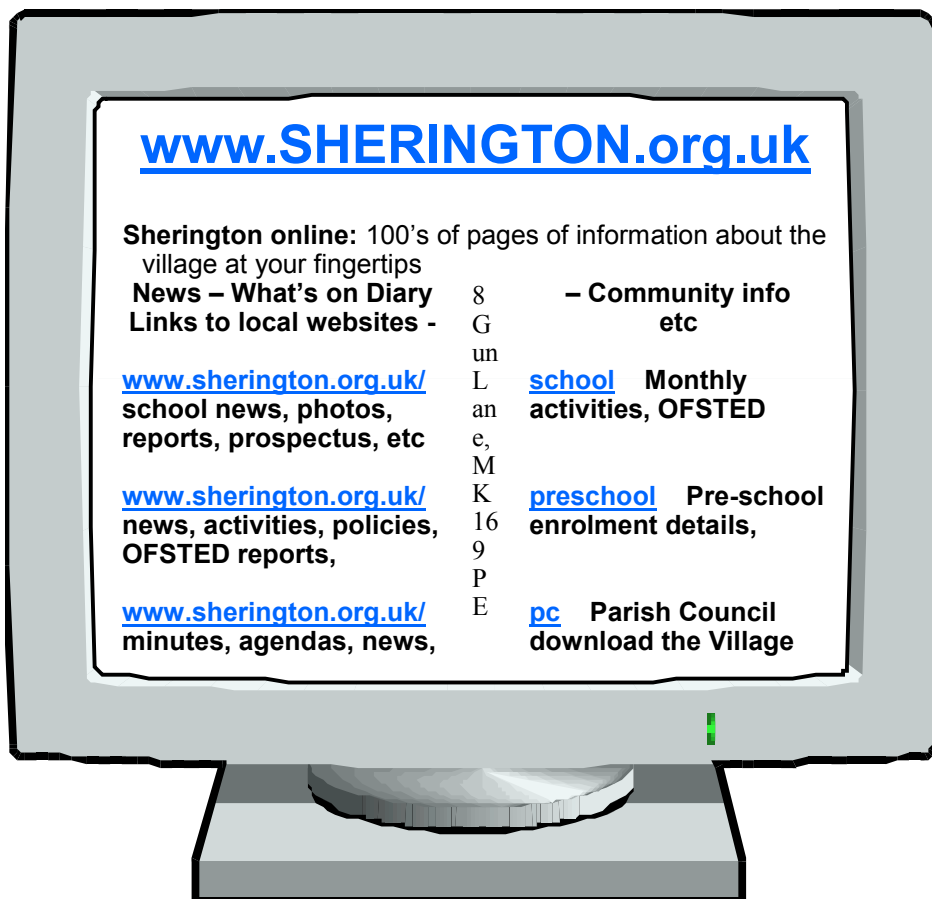
SCATS for SCAN Teens (13-18s). Join the dots in the Bible. You know the stories, but how do they fit.. Want to join? Contact Pam Fielding on 616763

During the warmer months on a Friday afternoon, we have afternoon teas in aid of the church during school term time from 2:30pm to 4:45pm. Checkl scans for times and locations.

For those that are interested in Bell Ringing St Lauds a ring of 5 Bells with the Tenor being 12cwt.. There is a practice held on the 2nd and 4th Thursdays of the month between 7:30 and 9pm. For more information on this please contact Mark Vale on 216543.

For more events or the latest news check out our Website: <http://www.scanparish.org.uk/>

Whatever your faith we welcome you to Sherington.



*The website has 100's of visitors every month.*

Ensure your organisation/news/event is included – it's free.

Suggestions, comments, news, photos, and information for inclusion are always welcome – just send them in.

*Serving the village since 1997!*

**Contact:** Ian Collinge, 8 Gun Lane (opposite the White Hart)

**Email:** [feedback@sherington.org.uk](mailto:feedback@sherington.org.uk)

**Also:** for village history online, visit [www.mkheritage.co.uk/shhs](http://www.mkheritage.co.uk/shhs)

# Sherington Parish Council

12 Carters Close, Sherington, Newport Pagnell, Bucks, MK16 9NW

Tel: 01908 616283 Email: [wendy543@hotmail.com](mailto:wendy543@hotmail.com)

Chairman:	Mr Alec Denman	5 Perry Lane, MK16 9NN	Tel: 612455
Vice-Chairman:	Mr John Ager	5 Bedford Road, MK16 9NG	Tel: 216573
Councillors:	Mr David Hyde	32 Carters Close, MK16 9NW	Tel: 616404
	Mr Mel Northfield	The Walnut Barn, 3 End Farm, Water Lane, MK16 9NT	Tel: 613393
	Dr Ian Collinge	8 Gun Lane, MK16 9PE	Tel: 618223
	Mrs Sally Cook	Manor Farm, MK16 9NN	Tel: 615887
	Mr James Cook	2 Sayers Close Silverstone, Northants, NN12 8TZ (01327 857536 evening)	Tel: 07980 136539
Clerk:	Mrs Wendy Austyn	12 Carters Close	Tel: 616283

If you have an issue you wish to raise or require further information on the Parish Council's activities, you can email the Council direct at the following email address:

[parishcouncil@sherington.org.uk](mailto:parishcouncil@sherington.org.uk)

- Alternatively, please contact any Councillor, or the Parish Clerk on [wendy543@hotmail.com](mailto:wendy543@hotmail.com)
- All Parish Council meetings are open to members of the public and are normally held in the Village Hall on the first Tuesday of each month at 7.30pm.
- The Agenda for each meeting is issued a few days beforehand and is available on the web site, post office, shop and village notice boards
- There is always a 'public question time' item, so that members of the general public have an opportunity to make comments or put questions to their councillors
- The Minutes are also available for reference on the web site, post office and shop
- The Annual Parish Meeting is held in May each year.